



ACCESSORIES LINE

Tyre Equipment & Tools

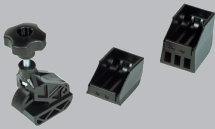
CARLINE

ACCESSORIES



TYRE CHANGERS ACCESSORIES

FOR ALL



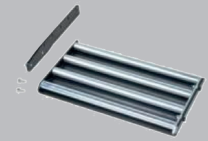
PN: 1 695 103 302
Bead locking plier



PN: 1 695 103 261 - 1 695 103 216
Low wedge and high wedge



PN: 1 695 105 190
Mounting lever (WdK-Model)



PN: 1 695 106 190
Roller board



PN: 1 695 105 191
Rim protection



PN: 1 695 42 877
Michelin inflating gun
(CE approval)

SPECIFIC FOR ALL TRADITIONAL MOUNTING HEAD



PN: 1 695 103 858
Button operated
tubeless tyre inflation
kit



PN: 1 695 102 725
Turret wing protection



PN: 1 695 106 152
Plastic protection kit
for bread breaker tool



PN: 1 695 103 210
Plastic motorbike turret+
adapter



PN: 1 695 103 211
Plastic turret+
adapter kit

SPECIFIC FOR 520S



PN: 1 695 910 154
Tecnoroller (520S)

SPECIFIC FOR BL 512



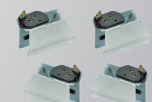
PN: 1 695 101 402
Jaw plastic protection
kit



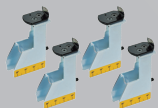
PN: 1 695 101 608
Button operated
tubeless tyre inflation kit



PN: 1 695 103 858
Button operated
tubeless tyre inflation
kit



PN: 1 695 103 752
26'' attachments



PN: 1 695 103 543
Motorbike attachments
kit



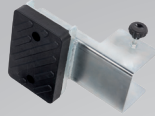
PN: 1 695 103 252
Motorbike bead
breaker support unit

TYRE CHANGERS ACCESSORIES

SPECIFIC FOR EVO 620S -624S -628S



PN: 1 695 101 575
Motorbike/Scooter Adaptors



PN: 1 695 101 518
Bead breaking spacer motorbike wheel



PN: 1 695 102 584
Kit storage without manometer



PN: 1 695 903 401
Tecnoroller NG



PN: 1 695 107 469
Side lift NG



PN: 1 695 107 490
Memory ring



PN: 1 695 108 055
Pressing cone for outer clamping



PN: 1 695 102 148
Jaws plastic protection kit

SPECIFIC FOR EVO 630 / F16



PN: 1 695 108 913
Blast inflating system



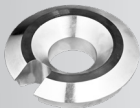
PN: 1 695 102 584
Storage kit (630)



PN: 1 695 108 913
Blast inflating system



PN: 1 695 107 439
Wheel clamping adaptor kit for reverse mounted wheels



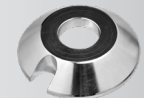
PN: 1695 107 440
Light truck cone Ø 75 - 145 mm



PN: 1 695 107 444
Rubber guard for flange



PN: 1 695 107 442
Light truck cone Ø190 - 223 mm + spacer



PN: 1 695 107 441
Cone Ø 75 - 120 mm for steel rims



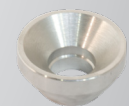
PN: 1 695 000 289
Cone Ø 70 mm



PN: 1 695 108 136
Light truck cone Ø 110 - 190 mm + spacer



PN: 1 695 108 138
Cone Lamborghini



PN: 1 695 108 139
Cone Porsche



PN: 1 695 108 140
Cone BMW



PN: 1 695 108 196
Wheel clamping adaptor kit for clad wheels



PN: 1 695 108 195
Light truck kit: cones Ø120-190 mm / Ø190-223 mm + spacer



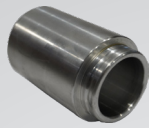
PN: 1 695 000 323
BMW centring flange

TYRE CHANGERS ACCESSORIES

SPECIFIC FOR EVO F10



PN: 1 695 105 855
Ring Adapter unit F10



PN: 1 695 109 754
Clamping lever handle for ring cone F10



PN: 1 695 109 755
Centering cone 42-78mm with ring F10



PN: 1 695 109 752
Centering cone for Mini with ring F10



PN: 1 695 109 760
FRU Flange



PN: 1 695 102 148
Wheel plastic protection



PN: 1 695 109 766
Light truck kit



PN: 1 695 000 074
Sprinter Adaptor Set



PN: 1 695 109 570
Blast inflating System



PN: 1 695 109 807
Bead Pressing Clamp

SPECIFIC FOR TF 311



PN: 1 695 107 492
Protection kit



PN: 1 695 107 493
Bead pressing device



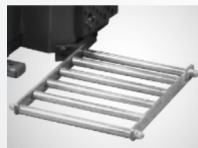
PN: 1 695 107 496
Motorcycle demounting head



PN: 1 695 107 494
Bead blaster



PN: 1 695 107 498
Quick change tool assembly



PN: 1 695 107 501
Rollerboard



PN: 1 695 107 495
Motorcycle adapter



PN: 1 695 107 497
Small lever

FOR TF 311

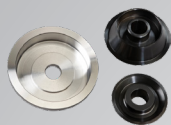


PN: 1 695 903 411
Helper TCE 60



WHEEL BALANCER ACCESSORIES

FOR ALL



PN: 1 695 654 849
Light transport vehicle cone (88-132mm)



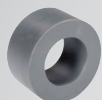
PN: 1 695 655 293
Four center ring cone set 42-111.5 mm



PN: 1 695 654 060
Monolever wheels centring kit+shaft 19mm



PN: 1 695 604 700
Centering shaft (Ø 14mm)



PN: 1 695 654 895
Polyamide spacer (donut) for Off-Road (40 mm)



PN: 1 695 612 100
Quick bolt kit for 3-4-5 hole flange



PN: 1 695 654 043
3-4-5 hole Flange



PN: 1 695 656 698
DuoExpert System (3 collets in a case 54-78mm)



PN: 1 695 655 316
Distance ring with magnets for Off-Road



PN: 1 695 655 321
Quick Fix for 19 mm shaft



PN: 1 695 653 430
Centering shaft (Ø 10mm)



PN: 1 695 900 004
Tyre Elevator



PN: 1 695 656 570
Kit demobox for passenger car



PN: 1 695 653 420
Three arm flange for light trucks



PN: 1 695 606 200
Cone spacer



PN: 1 695 655 295
Quickplate 4-holes with standard heads



PN: 1 695 654 117
Quick Fix for 14 mm shaft



PN: 1 695 653 888
Large diameter clamping hood



PN: 1 695 601 012
Airgo wheel lift



PN: 1 695 655 303
Fix plate No. 4



PN: 1 695 655 296
Quickplate 5 - holes with standard heads



PN: 1 695 655 297
Quickplate 6 - holes with standard heads



PN: 1 695 655 29
Wall board quickplate



PN: 1 695 655 299
Fix plate world kit



WHEEL BALANCER ACCESSORIES

FOR ALL



PN: 1 695 655 313

Head / long taper Ø 22,5 mm



PN: 1 695 655 311

Head/ Range/ Landrover Ø 34 mm



PN: 1 695 655 305

Wall board fix plate



PN: 1 695 655 314

Head / long taper Ø 19 mm/ lenght head 55.6 mm



PN: 1 695 655 312

Head / long taper Ø 22,5 mm



PN: 1 695 655 306

Head /short taper Ø 24,5 mm



PN: 1 695 655 308

Head /short taper Ø 24,5 mm



PN: 1 695 655 310

Head /rounded head Ø 24,5 mm



PN: 1 695 654 376

Certified weight for calibration (60 g)



PN: 1 695 653 888

Large diameter clamping hood



PN: 1 695 624 800

Rubber cup



PN: 1 695 655 323

Special centering kits for GM/OPEL



PN: 1 695 655 324

Special centering kits for GM/OPEL Expert



PN: 1 695 656 783

Light truck centering kit



PN: 1 695 656 822

Centering kit BMW



PN: 1 695 655 326

Special centering kit



PN: 1 695 654 919

Centering sleeve Mercedes



PN: 1 695 655 780

Centering sleeve 58/65 mm



PN: 1 695 655 781

Centering sleeve 55/60/65 mm



PN: 1 695 000 007

Centering sleeve for Mini Countryman



PN: 1 695 656 571

Centering sleeve (f.e. Renault / Dacia)



PN: 1 695 654 628

Flange plate adaptor



PN: 1 695 654 629

Flange plate adaptor



PN: 1 695 653 449

Flange plate adaptor (TSP No.4), colour-coded, without studs



WHEEL BALANCER ACCESSORIES

FOR ALL



PN: 1 695 635 100

Set of four flange adaptors



PN: 1 695 655 327

Off road set with 2 flange



PN: 1 695 656 698

Duo expert system (3 collets in a case 54-78)



PN: 1 695 656 570

Demo kit for passenger car



PN: 1 695 654 186

Flange plate adaptor 3x112/5x112/130/140



PN: 1 695 653 936

Flange plate adaptor 4x100



PN: 1 695 654 862

Plug in-stud «III» 90mm long



PN: 1 695 654 860

Plug in-stud «IV» 80mm long



PN: 1 695 654 921

Plug in-stud «V» 100mm long



PN: 1 695 654 864

Plug in-stud «V» 100mm long



PN: 1 695 654 626

Plug in-stud «II» 80mm long



PN: 1 695 656 830

Fixed stud, 80 mm long Diam. 25,4



PN: 1 695 656 834

Pin Ø 12 x 100 mm



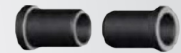
PN: 1 695 000 259

Flange kit BMW - BMW homologated



PN: 1 695 653 437

Adapter kit Harley Davidson (19 mm axle)



PN: 1 695 653 465

Adapter kit Harley Davidson V Rod (19 mm axle) 25,4 mm diameter



PN: 1 695 600 210

Centering kit for bike BMW IAM 14 mm axle



PN: 1 695 653 538

Adaptor Ducati Triumph



PN: 1 695 600 209

Centering kit for bike - BMW IAM 19 mm axle



PN: 1 695 000 296

BMW centering sleeves kit



PN: 1 695 600 254

Centering shaft Ø 19 mm for conical shaft gripping length 270 mm



PN: 1 695 656 409

Printer stand/cone and flange holder

FOR SBM 60/60A - SBM V85 A

FOR SBM 135 - 165 / V660L



PN: 1 695 656 936

Kit external data arm "L" version



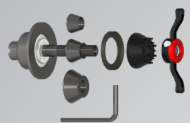
PN: 1 695 656 935

Sonar



WHEEL BALANCER ACCESSORIES

HAWEKA STANDARD EQUIPMENT



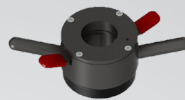
PN: 1695601010

Mid centring device Tr. 40x3 incl. 3 cones (44-111,5mm), ProGrip wing nut and clamping hood.
Length of shaft: 240mm



PN: 1695655837

Mid centring device US Tr40x4, 5 cones (44-132mm), ProGrip wing nut and clamping hood and Off-road Spacer
Length of shaft: 240mm



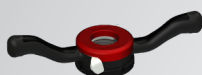
PN: 1695101057

ProGrip quick nut for Sicam tyre changers



PN: 1695616200

ProGrip quick nut for Sicam wheel balancer



PN: 1695000478

SoftGrip quick nut for Sicam wheel balancer
-Lower height, Longer life of jaws, Higher torque prevents opening under load



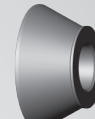
PN: 1695632500

Cone 44-64,7 mm



PN: 1695652862

Cone 54-79,7 mm



PN: 1695605600

Cone 74-111,5 mm



PN: 1695655757

Light-Truck Cone 168,5 - 194,5



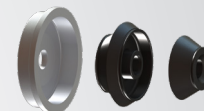
PN: 1695627200

Truck Cone 198-225mm



PN: 1695654848

Truck Cone 279-286,5mm



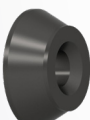
PN: 1695654849

Off road and Light-Truck Cone-kit and alloy spacer (O49+O43)



PN: 1695606300

Light-Truck Cone 122-174mm



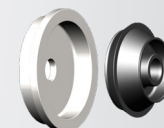
PN: 1695653499

Off road cone 95-132 mm



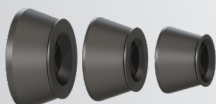
PN: 1695654851

3 cone kit 44-111,5 mm (O08+O09+O12)



PN: 1695654627

Light Truck cone kit and spacer (O43)



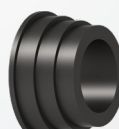
PN: 1695655293

4 cone kit with lower angle



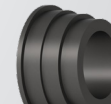
PN: 1695655780

Centring diameter(s): 58/65



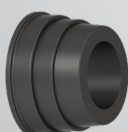
PN: 1695655781

Centring diameter(s): 55/60/65mm - Citroen/ Renault/Peugeot



PN: 1695655511

Centring diameter(s): 54/60/64mm - Toyota



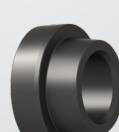
PN: 1695656571

Centring diameter(s): 58,5-61,5/66/71 mm



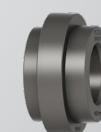
PN: 1695000007

Centring diameter(s): 72,5 (71,5-74,6) - Land Rover Range Rover



PN: 1695600216

Centring diameter(s): 56-57/72,5-74mm - BMW



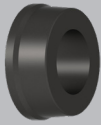
PN: 1695000073

Centring diameter(s): 65/66,5/84mm - Mercedes



WHEEL BALANCER ACCESSORIES

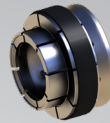
HAWEKA STANDARD EQUIPMENT



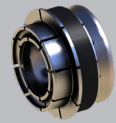
PN: 1695600214
Centring diamenter(s):
66,5mm - BMW (models
from 2013)



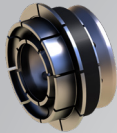
PN: 1695656698
DuoExpert Kit (3
collects 001+002+003)



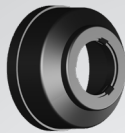
PN: 1695656817
DuoExpert collect #1 -
range 54-62 mm



PN: 1695656818
DuoExpert collect #2 -
range 62-70mm



PN: 1695656819
DuoExpert collect #3 -
range 70-78 mm



PN: 1695616500
Clamping hood fits all
ProGrip wing nuts



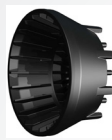
PN: 1695624800
Rubber cap for
clamping hood 190 008
002 + 190 008 065



PN: 1695653888
Large diameter (220
mm) clamping hood for
alloy rims. Suits Haweka
Progrip wing nuts



PN: 1695616100
Pressure ring, fits all
Haweka wing nuts



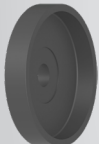
PN:1695000477
Clamping hood fit only
SoftGrip wing nuts



PN: 1695653224
Spring, conical for
open MCD, DuoExpert



PN: 1695600061
Aluminium spacer disc



PN: 1695654373
Distance spacer used
with cone 150 400 024



PN:1695606200
Distance spacer Sicam



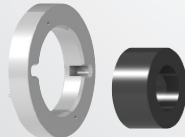
PN: 1695652902
Steel spacer Sicam /
Haweka



PN: 1695655316
Distance ring (36mm)
with magnets for Off-
Road cone from the
back incl. Pins



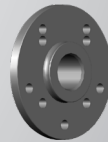
PN: 1695654895
Polyamid spacer
(donut) for Off-Road



PN:1695901677
190e008 + 190e400
045



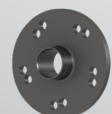
PN: 1695635100
Set of 4 flange adaptors,
professional set with 3
sets of studs, colour-
coded, 1 wall board,
wallchart, CD-Rom



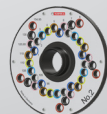
PN: 1695654927
Flange plate adaptor
4x10075x120, BMW



PN:1695654628
WorldKit (TSP No. 1-11mm
studs), colour-
coded,without studs
4x95,25/4x98/4x100
/4x101,6/4x108/
4x114,3/7x150/4x170/4x180



PN: 1695600215
Adaptor Plate



PN: 1695654629
Flansch 5X98-108-110-
115-120,65

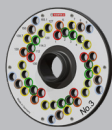


PN: 1695655315
Flansch 5X98-108-110-
115-120,65



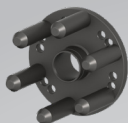
WHEEL BALANCER ACCESSORIES

HAWEKA STANDARD EQUIPMENT



PN: 1695654630

WorldKit (TSP No.3 - 11 studs) colour-coded, without studs 5x100/5x112/5x114,3 / 5 x 1 2 0 / 5 x 1 2 7 / 5x130/5x139,7/5x150



PN: 1695600222

Flange plate adaptor 6x130/6x120/6x125, without Studs, Mercedes Benz Sprinter from 01.01.06/Iveco/VW Crafter



PN: 1695656831

Plug-in stud 80mm long, short taper, ø 24,5 mm



PN: 1695656830

Plug-in stud 80mm long, long taper, ø 24,5 mm



PN: 1695656835

Plug-in stud 120mm long, rounded head, Porsche ø 24,5 mm



PN: 1695654641

Plug-in stud 80mm long, short taper ø 24,5 mm



PN: 1695654553

Plug-in stud 80mm long, long taper ø 24,5 mm



PN: 1695654626

Plug-in stud "II" 80 mm long, short taper, ø 24,5mm (11mm)



PN: 1695654860

Plug-in stud "IV" 80 mm long, Range/Land Rover, ø34 mm



PN: 1695656833

Plug-in stud 90mm long, long taper, ø 24,5 mm



PN: 1695654862

Plug-in stud "III" 90 mm long, rounded head, ø 24,5mm (11mm)



PN: 1695656832

Plug-in stud 100 mm long, rounded head, Porsche, ø 24,5 mm



PN: 16951000038

Plug-in stud 100 mm long, long taper, ø 22,5 mm



PN: 1695654864

Plug-in stud "I" 100 mm, ø 19 mm (11mm)



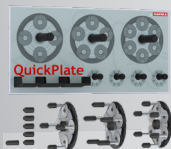
PN: 1695654921

Plug-in stud "V" 100 mm long, ø 22,5 mm (11mm)



PN: 1695656834

Plug-in stud 100 mm long, spring loaded, short taper, ø 24,5 mm



PN: 1695655294

Set of QuickPlates (4-5 and 6 holes plate) incl. wall board



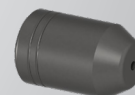
PN: 1695655296

Set of QuickPlates 5 holes with standard heads (5pcs. 1695655310 + 5 pcs. 1695655313)



PN: 1695655297

QuickPlates 6 holes with standard heads (6 pcs. 1695655307)



PN: 1695655307

Head, short taper, length head 38 mm, ø24,5 mm



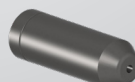
PN: 1695655310

Head, rounded, length head 48 mm, ø24,5 mm



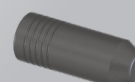
PN: 1695655311

Head, Range, Landrover, length head 38 mm, ø34 mm



PN: 1695655314

Head, long taper, length head 55,6 mm, ø19,0 mm



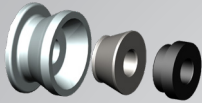
PN: 1695655313

Head, long taper, length head 58 mm, ø22,5 mm



WHEEL BALANCER ACCESSORIES

HAWEKA STANDARD EQUIPMENT



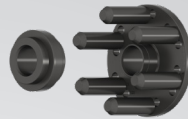
PN: 1695654099

Centring kit for Quad-rims



PN: 1695000074

Centring kit for Light Truck for dual wheels MB Sprinter/VW Crafter PCD: 6x205-middle hole ø161mm



PN: 1695656783

MB Sprinter / VW Crafter standard wheels



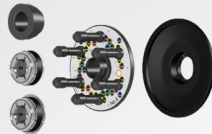
PN: 1695655326

Centring kit Mercedes and Smart



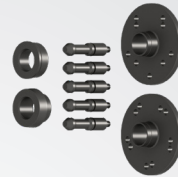
PN: 1695655323

Centring kit GM Kit 1



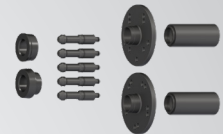
PN: 1695655324

Centring kit GM Kit 2



PN: 1695656822

Centring kit BMW 4x100/5x120 + 5x112/120



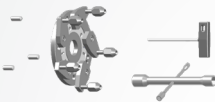
PN: 1695657004

Centring Kit BMW 4x100/5x120 + 5x112/120 For Sicam "P"-balancers



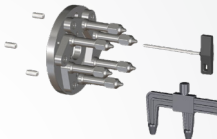
PN: 1695104035

UniLug for tyre Falco AF 2500/3000



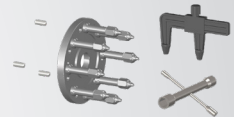
PN: 1695105904

UniLug for tyre Falco AF 3009



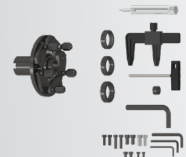
PN: 1695105907

TCF Lug Adaptor 6-hole-wheels Falco AF 3009



PN: 1695105908

TCF Lug Adaptor 8-hole-wheels Falco AF 3009



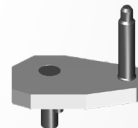
PN: 169565443

"UniLug" for machines with conical shaft for Sicam wheel balancers incl. centring rings ø58 mm/60mm/65mm



PN: 1695654122

Complete lug for "UniLug" (series 405)



PN: 1695630900

Complete lug for "UniLug" series 400, conical



PN: 1695654123

Complete lug for "UniLug" (series 405) Master - pin with silver colour



PN: 1695630700

Control disc "UniLug" II (plastic)



PN: 1695654119

Centring ring ø58mm



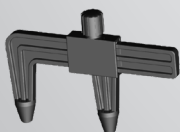
PN: 1695654118

Centring ring ø60mm



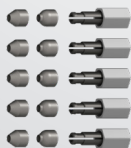
PN: 1695654120

Centring ring ø65mm



PN: 1695629100

PCD tool for "UniLug" 4/5/6 hole rim



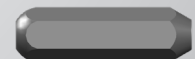
PN: 1695612100

Schnellspann Konus



PN: 1695607500

Mutter M10X1,25



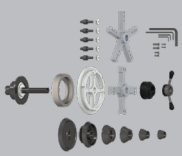
PN: 1695654042

Mutter M 101,25 mm



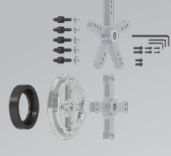
WHEEL BALANCER ACCESSORIES

HAWEKA STANDARD EQUIPMENT



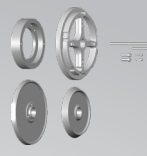
PN: 1695636500

Light Truck and Truck Adaptor Kit "Profi" with upgrade for Off-Road, SUC and Cars



PN: 1695654928

Truck Adaptor Kit "Profi" for 19,5", 22,5" and 24" wheels



PN: 1695654929

Light Truck and Truck Adaptor Kit "Eco" for 17,5", 19,5", 22,5" and 24" wheels



PN: 1695626800

5 arm clamping star truck standard PCD: 225/285,75/335 mm



PN: 1695627100

4-arm clamping star truck PCD: 275 / 285 mm



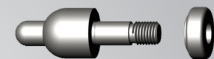
PN: 1695653420

3 arm clamping star truck PCD: 170/184,15/200/205/222,25/245



PN: 1695652901

Basic truck adaptor II Sicam, \varnothing 40mm



PN: 1695652903

Centering Bolt & Nut Truck (standard)



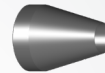
PN: 1695600281

ProBike III Modul BMW conical



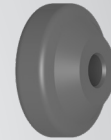
PN: 1695605100

Knurled nut M14 motorcycle shafts 14 mm or more



PN: 1695604800

Centering cone 14,2 - 30 mm (14 mm axle)



PN: 1695653539

Polyamid pressure piece (19 mm axle)



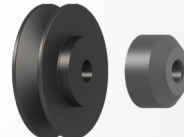
PN: 1695600210

Centering kit BMW (<2005) Sleeve and pressure piece for \varnothing 14 mm shaft



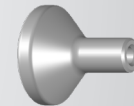
PN: 1695653437

Adaptor kit HARLEY DAVIDSON (19 mm axle)



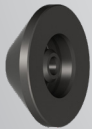
PN: 1695600209

Centering kit BMW (>2005) + R 1200 GS, Centering Sleeve, pressure piece for \varnothing 19 mm shaft



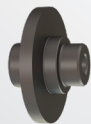
PN: 1695600208

Polyamid pressure piece Honda/BMW (14mm axle)



PN: 1695600206

Centering Sleeve BMW 14 mm for real wheels (monolever) (<2005) w/o R1200 GS



PN: 1695653538

Adaptor for all Ducati monolever (19 mm axle)



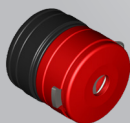
PN: 1695653531

Distance sleeve



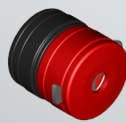
PN: 1695600207

Centering disk BMW monolever (2005 <) and R1200 GS



PN: 1695654117

Quick Fix for 14 mm shaft



PN: 16956555321

Quick Fix for 19 mm shaft



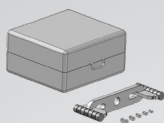
WHEEL BALANCER ACCESSORIES

HAWEKA STANDARD EQUIPMENT



PN: 1695654889

Flange Plate storage facility "Trolley" with perforated plate and 40 mm ø pins



PN: 1695654631

Testing Device for wheel balancers



PN: 1695656570

Demo Box PKW / BOSCH



PN: 1695656569

Demo Box LLKW / BOSCH



PN: 1695601012

AirgoLift II, wheel lifting device for balancers

FOR BA 201



PN: 1695600479

Motorcycle adapter



PN: 1695600480

Universal adapter



PN: 1695600481

Blind adapter



WHEEL ALIGNERS ACCESSORIES

FOR ALL



PN: 1 690 311 164
Special claws for multi-fit clamp



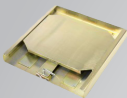
PN: 1 690 701 052
Ramp kit for turnables (short)



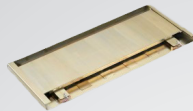
PN: 1 690 401 007
Steering wheel lock



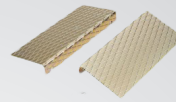
PN: 1 690 311 112
4 X Multi-Fit clamps



PN: 1 690 401 003
Sliding plate "short"



PN: 1 690 401 004
Sliding plate "long"



PN: 1 690 401 008
Drive on ramps for turntables and short sliding plate short



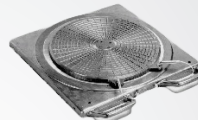
PN: 1 690 401 006
Brake lock



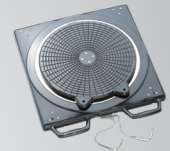
PN: 1 690 701 041
Trolley for wheel clamps and measuring boards



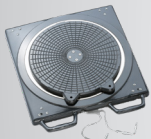
PN: 1 690 402 001
Rubber cover



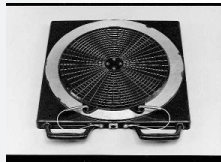
PN: 1 690 501 001
Mechanical standard aluminum turntable without electronics



PN: 1 690 321 018
Electronic aluminum turntable with connection cable to CCD-sensor heads

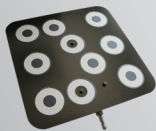


PN: 1 690 401 013
Aluminium precision turntable with electronics



PN: 1 690 401 011
Electronic standard aluminium turntable without connection cable

SPECIFIC FOR D³



PN: 1 690 701032
Additional larger boards



PN: 1 690 701 040
Wall board for accessories



PN: 1 690 701 020
Special lift adapter - lift with U-profile



PN: 1 690 701 123
Special lift adapter



PN: 1 690 711 005
Measuring board



PN: 1 690 700 014
Calibration device 3D



PN: 1 690 702 082
Filling bars for turntables plastic



PN: 1 690 701 045
Step protection for 3D sensor heads



WHEEL ALIGNERS ACCESSORIES



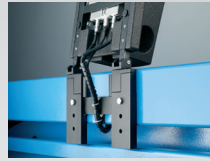
PN: 1 690 701 027

Pit installation kit for leveling (height adjustment screws)



PN: 1 690 701 051

Set of 4 magnetic wheel fastener for 3 D boards



PN: 1 695 103 211

Accessory kit clamping plate (Kit 2 long)



PN: 1 695 103 211

Cable kit 12m for easy 3D



PN: 1 695 103 211

Cable kit 15m for easy 3D



PN: 1 695 103 211

Cable kit 25m for easy 3D

SPECIFIC FOR CCD



PN: 1 690 311 146

Wallboards for CCD Kits (2-parts)



PN: 1 690 401 056

Calibration device



PN: 1 690 311 113

Multi fit extensions to 28"



PN: 1 690 311 115

Multi fit truck claw



PN: 1 690 701 122

IR remote control inc. battery (OEM version)



PN: 1 693 740 001

Ballast bag 5 kg



PN: 1 693 740 002

Ballast bag 10 kg



PN: 1 693 740 003

Ballast bag 20 kg



PN: 1 690 501 250

Multi quick spanner 14-24"



PN: 1 690 311 116

Standard claws for multi fit wheel clamp



PN: 1695800366

Proclamp Plus for Sicam

TRUCK LINE

ACCESSORIES





TRUCK LINE ACCESSORIES

FOR KIT 4CCD - KIT 8 CCD - SA 800 8R/6R



PN: V1884

Console T100NG + Kit CCD support + Multi socket adapter



PN: V1885

Pc complete i5 with S.O. Windows + USB Converter



PN: V 1881

Fixing pin + Calibration bar + 2x legs support



PN: V1135

Trailer axle alignment bar complete with CCD



PN: V1136

Chassis alignment bars complete with CCD and magnets



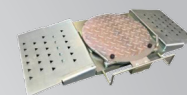
PN: V1888

4x standard clamps 12 - 25 car/truck + 4 x 87 mm lenght metal gripper set



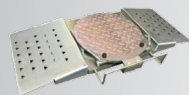
PN: V 1886

4x Quick clamp 3-points 13" - 30"



PN: V1879

2 x steel truntables for truck + 4 x truntables on/off ramp



PN: V14880

4 x steel truntables for truck + 8 x truntables on/off ramp



PN: V1882

Furmigated Case

FOR INFLATING CAGE



PN: 1 695 700 051

Tubeless inflation device



PN: 1 695 700 052

Electronic inflating system

FOR TRUCK TYRE CHANGERS



PN: 1 695 300 094

Heavy duty lever



PN: 1 695 300 099

Heavy duty pliers

FOR TRUCK TYRE CHANGERS



PN: 1 695 300 098

OTR - Split ring wheels clamp



PN: 1 695 300 102

Tubeless roller



PN: 1 695 103 526

Pneumatic bead depressor

FOR JUMBO TCS 26



PN: 1 695 400 139

Light alloy wheel protection for 26" (4 pcs.)

FOR JUMBO TCS 52 NW



PN: 1 695 301 711

Light alloy wheel protection for 52" (4 pcs.)



PN: 1 695 301 781

Center hole adaptor from 80 mm (4 pcs.)



PN: 1 695 301 712

Caterpillar adaptors (4 pcs.)



PN: 1 695 301 710

Extension 56" kit (4 pcs.)



PN: 1 695 301 782

Adaptors for thick rims (4 pcs.)

FOR JUMBO TCS 56 / TCS 60



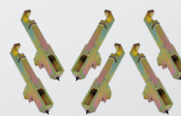
PN: 1 695 301 575

Light alloy wheel adaptors 56" (6 pcs.)



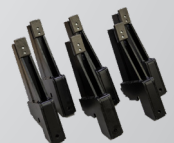
PN: 1 695 301 747

Centerhole adaptor from 80 mm (6 pcs.)



PN: 1 695 301 681

Caterpillar adaptors (6 pcs.)



PN: 1 695 301 606

Extensions Kit (6 pcs.)

MOTO LINE

ACCESSORIES



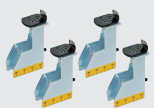


FOR MOTO TYRE CHANGERS



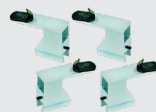
PN: 1 695 103 210

Motorbike mounting head kit



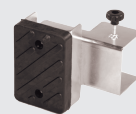
PN: 1 695 103 543

Motorbike adaptors (4 pcs)
(COLIBRI' - 520 S only)



PN: 1 695 103 542

Scooter adaptors (4 pcs)
(COLIBRI' - 520 S only)



PN: 1 695 101 518

Bead breaking spacer motorbike wheel



PN: 1 695 104 644

Bead pressing device motorbike

FOR MOTO WHEEL BALANCER



PN: 1 695 654 060

Monolever wheels centering kit + shaft (19 mm)



PN: 1 695 654 117

Quick Fix for 14 mm shaft



PN: 1 695 655 321

Quick Fix for 19 mm shaft



PN: 1 695 654 039

Basic motorbike wheel centering kit (14mm)



PN: 1 695 101 575

Motorbike/Scooter Adaptors



PN: 1 695 604 700

Centering shaft (ø 14mm) for conical shaft gripping length 233 mm



PN: 1 695 600 254

Centering shaft (ø 19mm) for conical shaft gripping length 270 mm



Sicam S.r.l. Società Unipersonale | Via G. Corradini, 1 - 42015 Correggio (RE) Italy
T: +39 0522 643-311 | F: +39 0522 637-760 | sales@sicam.it | www.sicam.it

member of **BASE** Group

BASE

REV. 02/2021
baseautomotive.com